



MXT68 Evolution





SERIES MXT68 Evolution

Our **Series MXT68 Evolution** is the middle-range window within our wood-aluminum system portfolio. Unbeatable technical features and high performance make it an ideal window for projects where security, quality and excellence in the materials used are a must.

PERFORMANCES:

Profile thermal insulation: 1,41 W/m² .K

Acoustic insulation: 33 dB (-1:-6)

(glazin 4-22-4 mm.)

Air resistance: Class 4

Water permeability: Class E1350

Wind resistance: Class C5

TECHNICAL FEATURES:

Sash section: 83 x 80 mm.

Frame section: 78 mm. (no rolling shutter)
118, 138, 151 mm. (with rolling shutter)

Glazing thickness: 30 or 48 mm. (triple glazing)

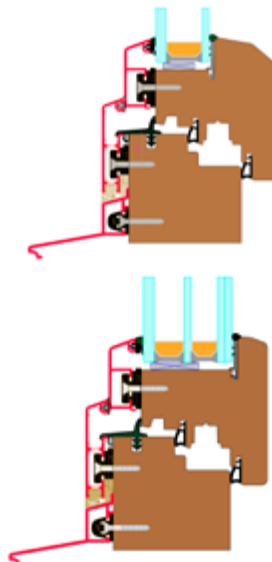
Triple (EPDM) rubber gasket

Hardware channel axle: 13 mm.

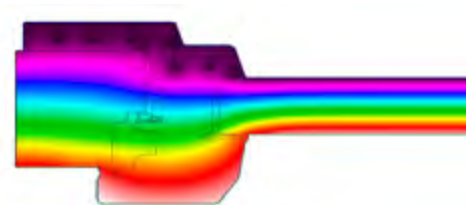
Electro welded exterior aluminium: as an option



SECTION:



TERMOGRAPHY:



ψ	U_g	U_w
0,06	2,7	2,39
0,06	2,6	2,33
0,06	2,5	2,27
0,06	2,4	2,22
0,06	2,3	2,16
0,06	2,2	2,1
0,06	2,1	2,04
0,06	2	1,98
0,06	1,9	1,92
0,06	1,8	1,86
0,06	1,7	1,81
0,06	1,6	1,75
0,06	1,5	1,69
0,06	1,4	1,63
0,06	1,3	1,57
0,06	1,2	1,51
0,06	1,1	1,46
0,06	1	1,4
0,06	0,9	1,34
0,06	0,8	1,28
0,06	0,7	1,22
0,06	0,6	1,16
0,06	0,5	1,1